

## Significant Events During the Quarter

### Tasmanian Tin Project:

- EBITDA up 27% on previous quarter to \$12.3 Million;
- Cash operating costs A\$12,518/t tin metal produced;
- Tin price above A\$21,500/t with strong market fundamentals;
- Underground exploration continued to define and extend the known ore systems;
- Renison underground Reserve increased by 61%;
- New zone of mineralisation in the hanging wall of the Federal fault system discovered open to the north and at depth;
- Significant underground Copper assays continue to be returned.

### Wingellina Nickel Project:

- Landmark Mining Agreement secured for the massive Wingellina Nickel Project.

### Strategic Investments:

- Jabiru Metals Limited (19.9% MLX) returns solid quarterly operating performance and significant reserve upgrade for the Jaguar Project.
- Westgold Resources Limited (32% MLX) continues to deliver strong high grade copper and gold results from its Rover 1 Project.

### Corporate:

- Closing cash and equivalents balance of \$53 Million with no corporate debt.

## Enquiries

### Warran Hallam

Managing Director

t: +61 8 9220 5700

e: [warren.hallam@metalsx.com.au](mailto:warren.hallam@metalsx.com.au)

### Scott Huffadine

Executive Director

t: +61 8 9220 5700

e: [scott.huffadine@metalsx.com.au](mailto:scott.huffadine@metalsx.com.au)

Metals X Limited is a diversified group exploring and developing minerals and metals in Australia. It is Australia's largest tin producer and holds a pipeline of assets from exploration to development, including the world-class Wingellina Nickel Project.

### Corporate Directory

ASX Code: MLX

Level 3, 123 Adelaide Tce  
East Perth, WA 6004

GPO Box 2606  
Perth, WA 6001

Phone: +61 8 9220 5700

Fax: +61 8 9220 5757

Email: [reception@metalsx.com.au](mailto:reception@metalsx.com.au)

Web: <http://metalsx.com.au/>

For more information about Metals X please visit our website at <http://metalsx.com.au/>



### Tin

Collingwood Tin Project

Renison Tin Project

Mt Bischoff Tin Project

Rentails (Renison Expansion)

### Nickel

Central Musgrave Project

Wingellina Prospect

Claude Hills Prospect

### Investments & Royalties

Westgold Resources Ltd

Aragon Resources Ltd

Agaton Phosphate Pty Ltd

Jabiru Metals Ltd

Gillian Royalty

## Operations Report

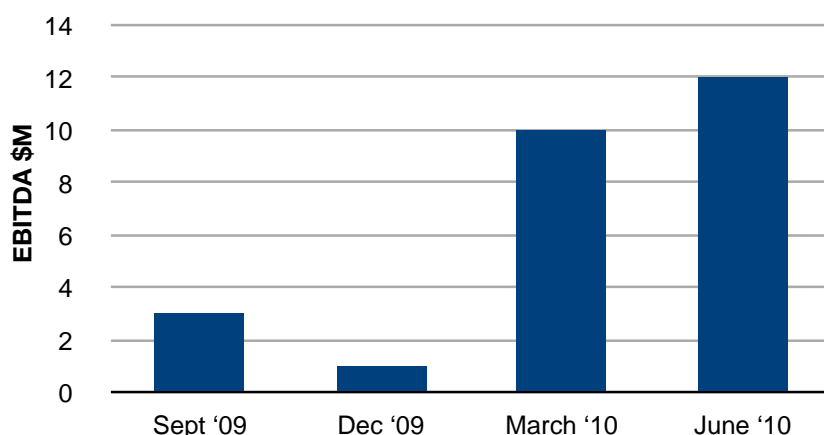
### Renison Tin Operations (MLX 50%)

The Renison Tin operations continued to perform consistently with production of 1,673 tonnes of tin metal in concentrates for the quarter, resulting in 6,266 tonnes of tin metal production for the previous 12 months.

The quarter on quarter cash operating surplus (EBITDA) for the quarter was 27% higher at \$12.3 Million and the net cash after capital re-investment and aggressive exploration was \$7.0 Million for the quarter, an increase of 10% over the previous quarter (\$6.3 Million).

Cash operating cost per tonne of tin metal for the quarter was A\$12,518/t allowing for an operating margin of approximately A\$8,000/t.

**Quarterly EBITDA - Renison Tin Operations**



The Renison Project is operating with a blend of mill feed from the Renison underground mine and the Mt Bischoff open-pit. The Mt Bischoff pit will be finished as planned in July 2010. A stockpile of 38,820t @ 1.13% remained at the end of the quarter and this will continue to supplement mill feed over the ensuing quarter after which the Renison underground mine will fully provide for all mill feed with production from both the Federal and North Renison internal declines.

The impact of the transition to mill feed sourced solely from Renison underground will be a further reduction in overall operating costs as full production will be sourced from the one mine. Further the substitution of lower grade ore from Mt Bischoff with the higher grade underground ores will result in increased tin production and therefore increased earnings. The full effect of this is expected to be observed from October 2010.

Mine productivity statistics for the current quarter and year to date show the steady improvement in underground productivity and grade and a resultant increase in tin production. Results are summarised in the following table:

**Renison Project Statistics by Quarter**

	Sept 2009	Dec 2009	Mar 2010	June 2010	Annual total
<b>Mining - Renison Bell</b>					
Total Tonnes Hoist	90,187	96,333	101,308	104,112	<b>391,940</b>
Mined Head Grade (% Sn)	1.69%	1.50%	1.82%	1.87%	<b>1.72%</b>
<b>Mining - Mt Bischoff</b>					
Ore Tonnes Mined	79,844	57,815	40,169	20,755	<b>198,583</b>
Ore Grade Mined (% Sn)	1.19%	1.40%	1.41%	1.20%	<b>1.30%</b>

	Sept 2009	Dec 2009	Mar 2010	June 2010	Annual total
<b>Total Mine Production</b>					
Ore Tonnes	170,031	154,148	141,477	124,867	<b>590,523</b>
ROM Grade (% Sn)	1.46%	1.46%	1.71%	1.77%	<b>1.58%</b>
<b>Tin Concentrator</b>					
Tonnes treated	134,207	160,783	147,845	144,579	<b>587,414</b>
Head Grade (% Sn)	1.55%	1.40%	1.71%	1.68%	<b>1.58%</b>
Tail Grade (% Sn)	0.52%	0.52%	0.52%	0.54%	<b>0.52%</b>
Tin Metal Produced	1,404	1,426	1,763	1,673	<b>6,266</b>
Tin Concentrate Grade	53.80%	54.87%	55.46%	56.46%	<b>55.14%</b>

## Underground Exploration

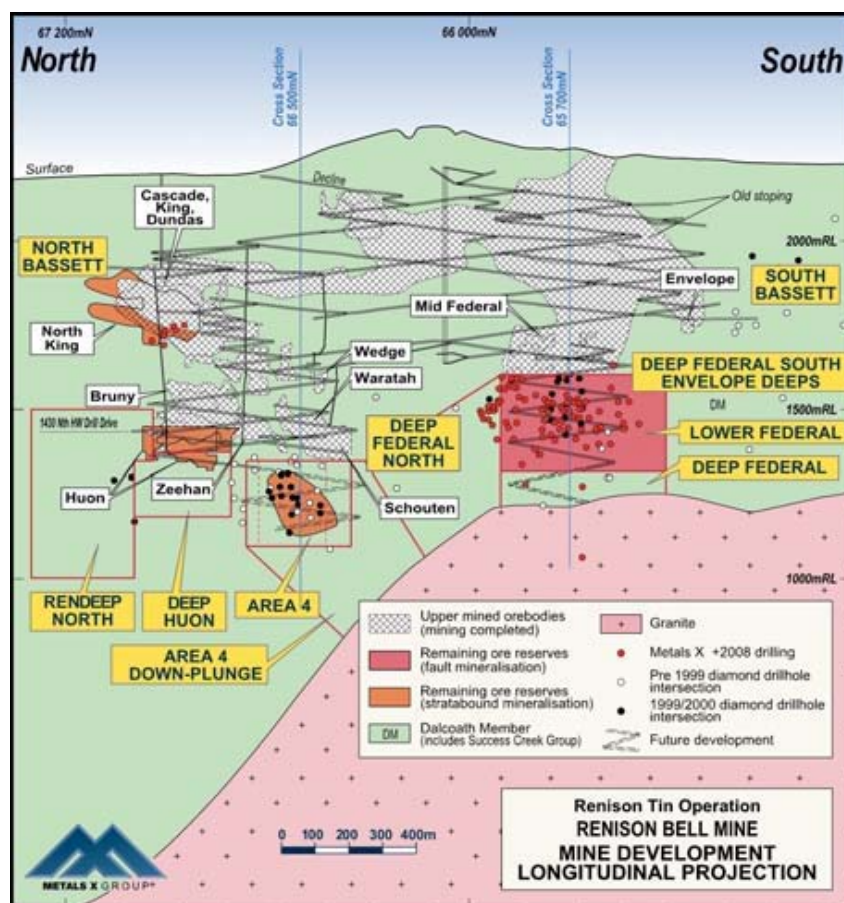
Exploration continued to confirm and extend the known ore systems in the mine.

Infill drilling of the Federal Fault in the south towards the granite contact has further highlighted the increase in the copper co-mineralisation zones which are coincident with the main fault. A full review of coincident copper mineralisation is currently underway and the future objective of this work is to evaluate the production of a copper concentrate as a sustainable co-product.

Significantly, drilling in the Federal zone has discovered a new zone of mineralisation in the hangingwall of the Federal fault system which is open to the north and at depth. The best intercept to date in hole UD4180 has been 11.5m @ 2.52% Sn.

Step-out drilling has also been conducted below the Dundas and King Resource areas in the north of the mine. To date a number of results have been returned from the newly defined Mawsons Lode including 13.54m @ 1.77% Sn and 0.47% Cu which lies in the footwall of the existing Lower King Resource. Drilling has also commenced on the upgrade and extension of the Area 4 Resource.

Lode	Hole	N	E	Intercept	From
Federal	U4118	65,782	44,464.3	4.11m @ 11.06% Sn	139.0
Federal	U4174	65,694	44,476.6	5.00m @ 3.98% Sn	171.0
Federal	U4177	65,752	44,483.7	5.37m @ 4.94% Sn	95.0
Federal HW	U4180	65,790	44,464.4	11.50m @ 2.52% Sn	205.5
Mid Federal	U4200	65,686	44,444.4	10.08m @ 1.76% Sn	18.9
Mid Federal	U4202	65,683	44,444.4	7.30m @ 2.01% Sn	17.5
Federal	U4178	65,752	44,483.7	8.70m @ 2.65% Sn, 1.17% Cu	117.3
Federal	U4182	65,753	44,483.7	3.83m @ 3.44% Sn, 2.15% Cu	134.5
Federal	U4185	65,790	44,464.4	3.57m @ 4.02% Sn, 2.46% Cu	199.0
Mid Federal	U4201	65,686	44,444.5	10.08m @ 1.76% Sn, 2.01% Cu	19.0
Mawsons	U4192	66,756	44,246.9	13.54m @ 1.77% Sn, 0.47% Cu	123.5



## Renison Surface Exploration

First pass drilling of the initial three surface mining targets was completed early in the quarter and subsequent initial pit optimisations will be conducted following completion of the resource modelling.

The recent drilling has targeted the surface expression of the Federal – Bassett structure (mined over a strike length of >2.1km underground), and the mine sequence dolomite host rocks located at and near to surface above the Renison underground mine (Sligo Orebody).

Further extensional drilling was conducted on the separate Dalcoath open pit resource where there is an opportunity to commence mining under the current operating permit. Better results from this drilling at Dalcoath are tabulated below:

Lode	Hole	N	E	Intercept	From
Dalcoath	SDALNQ013	64,877	43,340.5	4.15m @ 1.18% Sn	12.0
				6.00m @ 1.63% Sn	28.0

## 61% Increase in Mining Reserve Estimate

Metals X completed a review of its Identified Mineral Resource and Mining Reserve Estimates for its Tin Division during the quarter. Successful extensional exploration over the recent past has culminated in a year on year increase in Mining Reserves including reserve depletion of 61%.

Total Identified Mineral Resource Estimates for Renison are: 7.25Mt @ 1.77% Sn containing 128,391t Sn

Total Mining Reserve Estimates for Renison are: 1.66Mt @ 1.81% Sn containing 30,180t Sn

A categorised summary of the updated resources and reserves is provided in Appendix 1.

## Tin Price

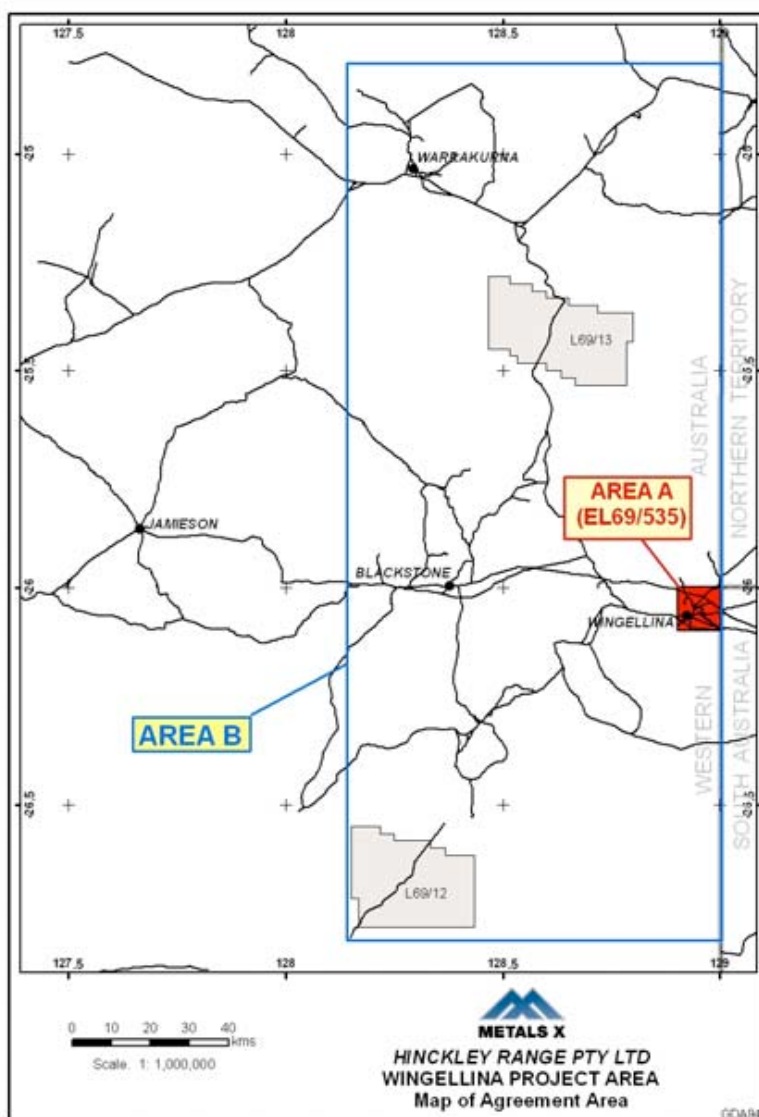
The average quarterly tin price was A\$20,230 which was slightly higher than the previous quarter of A\$19,066 and is currently trading above A\$21,500. Tin fundamentals remain strong with the LME stock levels having declined by over 37% from 1 April of 24,250t to 15,370t (26 July). The remaining LME stock level is equivalent to approximately 17 days of global supply at current levels of demand.

## Nickel Division

### Wingellina Project

During the quarter, Metals X continued with field activities in preparation for the future development of the Wingellina Project including the signing of a landmark mining agreement with the traditional owners and additional environmental and water studies required for environmental approvals.

The landmark mining agreement for the Wingellina project was signed on 15 July 2010 with the Traditional Owners of the Yarnangu Ngaanyatjarra Lands through their representative bodies. This is a major milestone for the development of the project. The agreement provides the right to mine and develop infrastructure within the agreement area subject to regulatory approvals and for the grant of a mining lease over whole of the tenement EL69/535 (Area A) which hosts the Wingellina deposit. In addition the agreement allows for the granting of additional project titles for water, pipelines, roads and other infrastructure over a much larger area (Area B as shown below).



Metals X is continuing to discuss funding options with its major shareholder APAC Resources (HKEX 1104) and China's largest nickel producer, Jinchuan Group Limited and can now move forward with increased confidence in tenure on these options now that the Mining Agreement has been completed.

Metals X previously announced that formal notification was received from the EPA on 23 March 2010 advising that the EPA has set the level of assessment for the Wingellina project as a Public Environmental Review (PER) with an 8 week review period.

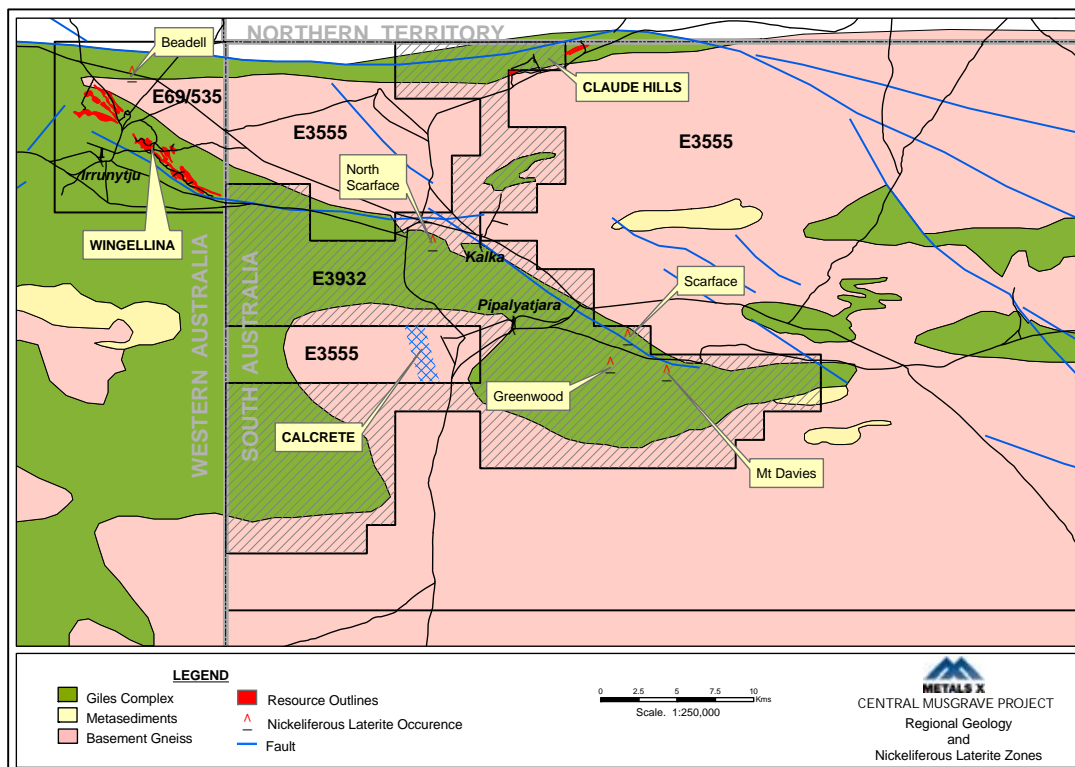
The Company has now received official feedback from the EPA confirming that the environmental scoping document is acceptable in its current form with minor amendments. Those amendments are expected to be lodged with the EPA by the end of July 2010. Planning for additional environmental studies, and the development of the PER document is well advanced and is anticipated to be completed by the end of March 2011.

Wingellina exhibits vastly different characteristics to the nickel laterite deposits that have hitherto been developed in Australia. Wingellina hosts a resource of almost 1.8Mt of contained nickel and is classified as a "Pure Oxide Tropical Laterite" deposit, similar in style to Moa Bay where the High Pressure Acid Leach process was originally developed and has operated successfully for over 50 years.

Metals X completed its Phase 1 Feasibility Study (+/- 25%) in September 2008, defining a robust project with a minimum 40 year life and average annual production of 40,000t of nickel and 3,000t of cobalt. The Feasibility Study assumed a nickel price of US\$20,000/t nickel, US\$40,000/t cobalt and a \$A/\$US exchange rate of 0.85, resulting in an estimated NPV(8%) of \$3.4 billion at a production cost of US\$3.34/lb after cobalt credits.

### Claude Hills Prospect

Drilling commenced at the Claude Hills Prospect in the last week of June 2010. The drilling program is targeting the extensions of the known mineralisation of the Claude Hills deposit that lies within the Mt Davies tenement, which is subject to an Earn In and Joint Venture Agreement with Rio Tinto Exploration.



Details of the Earn In and Joint Venture Agreement have been provided in previous announcements and requires a minimum expenditure of \$500,000 within the first two years, and \$2,000,000 within four years, to earn a 51% interest in the Mt Davies exploration licence. This can be increase to 70% ownership by sole funding exploration and development expenditure to the completion of a pre-feasibility study. Rio Tinto can elect to contribute following the earn-in phase to retain a 49% interest and can elect to earn-back up to 70% after the delivery of the pre-feasibility study, through the sole funding of a bankable feasibility study.

Drilling to date at Claude Hills has identified well developed additional Limonite mineralisation, however assay results remain pending.

## Strategic Investments

### Jabiru Metals Limited (19.9% MLX)

Jabiru Metals is an established base metals producer targeting annual production of 30,000t of Zinc and 10,000t of copper production from its Jaguar operations in Western Australia.

During the quarter Jabiru announced the commencement of the development of the new Bentley Underground Mine to supplement mine feed from the Jaguar Mine. The box cut has now been completed and development has commenced.

The Jaguar and Bentley deposits are high grade VMS deposits and the operation is one of the world's lowest cost zinc producers.

Jabiru also announced an upgrade to the Reserve for the Jaguar project to 2.05Mt @ 2.2%Cu, 10.6%Zn, 134 g/t Ag and 0.5 g/t Au which includes reserves from both Jaguar and Bentley and is equivalent to 5½ years of production at current processing rates.

Jabiru has previously announced that they are aiming to bring the copper-zinc-lead-silver-gold rich massive sulphide deposits in NE Victoria at the Stockman Project into production. This is comprised of the Currawong (9.2Mt at 2% Cu, 4.2% Zn and 1.1g/t Au) and Wilga (3.3 Mt at 2.4% Cu and 4.9% Zn) deposits.

For detailed information please refer to announcements by Jabiru Metals Limited (ASX:JML)

### Westgold Resources Limited (31.9% MLX)

Westgold has recently announced a total resource of more than 1 million ounces gold equivalent at its Rover 1 prospect, approximately 80kms south-west of Tennant Creek.

During the quarter Westgold continued to announce additional high grade copper and gold intercepts that confirms and extends the high-grade Jupiter Zone (>10g/t gold core) at Rover 1. Westgold announced drill hole WGR1D048-1 returning 12m @ 17.5g/t Au & 0.23% Cu from 538m, including 4m @ 48.3g/t Au & 0.08% Cu from 543m.

In addition a new high grade copper zone along the southern ironstone contact was intercepted returning 12m @ 2.01% Cu and 1.15g/t from 521m, including 5m @ 3.07% Cu and 2.6g/t.

For detailed information please refer to announcements by Westgold Resources Limited (ASX: WGR)

## Aragon Resources Ltd (8.72% direct & 28.47% voting MLX)

Aragon continues to explore and advance its Central Murchison Gold Project towards development and production.

During the quarter Aragon announced the following intercepts which confirms the high grade mineralisation below the Black Swan south pit (current Resource of 259,000 ozs Au) and at the high-grade Day Dawn Mining Centre (current Resource of 483,000 ozs Au):

### Black Swan

Black Swan South            2m @ 62.8g/t Au from 12m hole CMC0002  
                                          6.1m @ 7.1g/t Au from 458m hole CMC0003

### Day Dawn Mining Centre

Great Fingall Reef            2.9m @ 14.8g/t Au from 560.8m hole CMD0011  
 Golden Crown Lode            1m @ 7.1g/t Au from 52m hole CMD0012  
 Trenton                         3m @ 4.6g/t Au from 482m hole CMD0005  
 Try Again Lode                 0.8m @ 10.3g/t Au from 211.5m hole CMD0004  
                                          0.9m @ 7.7g/t Au from 233.5m hole CMD0004

For detailed information please refer to announcements by Aragon Resources Limited (ASX: AAG)

## Corporate

During the quarter Metals X acquired an additional 6 million shares in Westgold for \$2.4 Million to take its shareholding in Westgold to 31.99%.

Metals X ended the quarter with \$53 Million in cash and equivalents excluding its investments. The Group has no debt other than equipment leases and all security bonds are cash-backed.

### Capital Structure

The Company has the following equities on issue as of 30 June 2010.

Fully Paid Ordinary Shares	1,365,661,782
Unlisted Options convertible at \$0.46 on or before 30/11/10	1,000,000
Unlisted Employee Options - various conversions and dates	14,275,000
Fully Diluted Equity	<b>1,382,286,782</b>

### Major Shareholders

The major shareholders of the Company as of 30 June 2010 are:

APAC Resources (HK:1104)	29.08 %
Jinchuan Group	12.89 %
Sabatica Pty Ltd (GPG)	6.57 %
Straits Resources Limited and its affiliates	5.01 %

End

The information in this report that relates to Exploration Results, Mineral Resources and Ore Reserves is based upon information compiled by Mr Scott Huffadine B.Sc.(Hons), MAusIMM. Mr Huffadine is a full-time employee of the company. Mr Huffadine has sufficient experience which is relevant to the style of mineralisation and type of deposit under consideration and to the activities which they are undertaking to qualify as a Competent Person as defined in the 2004 Edition of the 'Australasian Code for Reporting of Exploration Results, Mineral Resources and Ore Reserves'.

## Appendix 1

### Tin Division

#### Identified Mineral Resources and Reserves as at 30 June 2010

Project	Tin			Copper		
	Kilo-Tonnes	Grade (%Sn)	Sn Metal (t)	Kilo-Tonnes	Grade (%Cu)	Cu Metal (t)
<b>Measured</b>						
Renison Bell	1,023	2.12	21,639	544	0.18	992
Mt Bischoff	41	1.17	481			
Rentails	18,957	0.44	83,715	18,957	0.21	40,256
Collingwood	28	1.39	385			
<b>Sub-total</b>	<b>20,049</b>	<b>0.53</b>	<b>106,220</b>	<b>19,500</b>	<b>0.21</b>	<b>41,248</b>
<b>Indicated</b>						
Renison Bell	3,183	1.68	50,193	331	0.19	636
Mt Bischoff	999	0.59	5,909			
Rentails	-	-	-			
Collingwood	269	1.34	3,617			
<b>Sub-total</b>	<b>4,449</b>	<b>1.41</b>	<b>62,859</b>	<b>331</b>	<b>0.19</b>	<b>636</b>
<b>Inferred</b>						
Renison Bell	3,047	1.75	53,387	1,064	0.48	5,120
Mt Bischoff	699	0.47	3,301			
Rentails	-	-	-			
Collingwood	346	1.06	3,680			
<b>Sub-total</b>	<b>4,093</b>	<b>1.47</b>	<b>60,367</b>	<b>1,952</b>	<b>0.59</b>	<b>11,449</b>
<b>Total</b>						
Renison Bell	7,253	1.77	128,391	1,939	0.35	6,748
Mt Bischoff	1,740	0.56	9,691			
Rentails	18,957	0.44	83,715	18,957	0.21	40,256
Collingwood	643	1.19	7,681			
<b>Total</b>	<b>28,591</b>	<b>0.80</b>	<b>229,446</b>	<b>20,896</b>	<b>0.22</b>	<b>47,004</b>

Note: Cut-off grades - 0% Sn for Rentails, above 0.3% Sn for Mt Bischoff, 0.7% Sn for Renison Bell and 0.5% Sn for Collingwood

**Tin Division**  
**Mining Reserve Estimate as at 30 June 2010**

Project	Tin				Copper		
	Cut-off %	Tonnes (Kilo-tonnes)	Grade	Sn Metal	Tonnes (Kilo-tonnes)	Grade	Cu Metal

**Proved Reserves**

Renison Bell	0.80%	444	1.71	7,589			
Mt Bischoff	0.50%	41	1.17	481			
Rentails	0.00%	-	-	-			
Collingwood	0.70%	-	-	-			
<b>Sub-total</b>		<b>485</b>	<b>1.66</b>	<b>8,071</b>			

**Probable Reserves**

Renison Bell	0.80%	1,220	1.85	22,591			
Mt Bischoff	0.50%	52	0.88	460			
Rentails	0.00%	18,116	0.44	79,673	18,116	0.21	38,312
Collingwood	0.70%	-	-	-			
<b>Sub-total</b>		<b>19,388</b>	<b>0.53</b>	<b>102,724</b>	<b>18,116</b>	<b>0.21</b>	<b>38,312</b>

**Total Mining Reserves**

Renison Bell	0.80%	1,664	1.81	30,180			
Mt Bischoff	0.50%	94	1.01	941			
Rentails	0.00%	18,116	0.44	79,673	18,116	0.21	38,312
Collingwood	0.70%	-	-	-			
<b>Sub-total</b>		<b>19,873</b>	<b>0.56</b>	<b>110,795</b>	<b>18,116</b>	<b>0.21</b>	<b>38,312</b>

**Nickel Division**  
**Identified Mineral Resources and Reserves as at 30 June 2010**

<b>0.5% Ni cut-off</b>	<b>Million Tonnes</b>	<b>Ni (%)</b>	<b>Ni Metal (t)</b>	<b>Co (%)</b>	<b>Co Metal (t)</b>
Measured	68.8	1.00%	688,470	0.08%	53,701
Indicated	98.6	0.97%	956,643	0.08%	73,967
Inferred	15.7	0.97%	152,552	0.07%	10,852
<b>Total</b>	<b>183.2</b>	<b>0.98%</b>	<b>1,797,665</b>	<b>0.08%</b>	<b>138,520</b>

**Mining Reserve Estimate as at 30 June 2010**

<b>0.5% Ni cut-off</b>	<b>Million Tonnes</b>	<b>Ni (%)</b>	<b>Ni Metal (t)</b>	<b>Co (%)</b>	<b>Co Metal (t)</b>
Proven	-		-		-
Probable	167.5	0.98%	1,645,113	0.08%	127,668
<b>Total</b>	<b>167.5</b>	<b>0.98%</b>	<b>1,645,113</b>	<b>0.08%</b>	<b>127,668</b>

## Appendix 2

### Significant Intercepts at the Renison Tin Mine June 2010 Quarter

Lode	Hole	N	E	Intercept	From
Dalcoath	SDALNQ013	64,876.8	43,340.5	4.15m @ 1.18% Sn	12.0
				6.00m @ 1.63% Sn	28.0
Federal	U4081	65,782.5	44,464.3	2.20m @ 1.70% Sn	121.2
Federal	U4118	65,782.3	44,464.3	4.11m @ 11.06% Sn	139.0
Federal	U4169	65,693.9	44,476.6	4.00m @ 1.63% Sn	135.0
Federal	U4174	65,693.9	44,476.6	3.49m @ 1.60% Sn	113.0
				5.00m @ 3.98% Sn	171.0
Federal	U4176	65,755.2	44,483.7	1.00m @ 8.60% Sn	87.0
Federal	U4177	65,752.4	44,483.7	5.37m @ 4.94% Sn	95.0
Federal	U4178	65,752.4	44,483.7	8.70m @ 2.65% Sn	117.3
				2.59m @ 1.33% Sn	139.0
Federal	U4179	65,781.9	44,464.4	2.25m @ 5.27% Sn	163.8
Federal	U4180	65,789.6	44,464.4	3.08m @ 3.55% Sn	186.3
				11.50m @ 2.52% Sn	205.5
Federal	U4181	65,752.5	44,483.8	1.37m @ 8.52% Sn	112.0
				0.50m @ 19.79% Sn	125.0
				2.61m @ 15.83% Sn	132.4
Federal	U4182	65,752.5	44,483.7	1.38m @ 5.35% Sn	124.6
				3.49m @ 3.77% Sn	134.5
Federal	U4183	65,781.9	44,464.4	2.24m @ 2.24% Sn	158.0
Federal	U4184	65,781.8	44,464.4	1.70m @ 10.44% Sn	171.2
				3.00m @ 1.50% Sn	184.0
Federal	U4185	65,789.6	44,464.4	3.57m @ 4.02% Sn	199.0
				2.13m @ 2.38% Sn	222.9
Federal	U4186	65,781.9	44,464.4	3.00m @ 1.89% Sn	144.0
Lower King	U4192	66,756.3	44,246.9	13.54m @ 1.77% Sn	123.5
				14.00m @ 3.81% Sn	140.0
				11.16m @ 1.67% Sn	169.8
Mid Federal	U4200	65,686.0	44,444.4	10.08m @ 1.76% Sn	18.9
Mid Federal	U4201	65,685.7	44,444.5	8.90m @ 1.56% Sn	19.0
				2.65m @ 1.80% Sn	31.6
Mid Federal	U4202	65,683.1	44,444.4	7.30m @ 2.01% Sn	17.5
Mid Federal	U4203	65,681.9	44,444.5	4.95m @ 1.46% Sn	20.2
Mid Federal	U4204	65,681.0	44,442.5	9.60m @ 1.33% Sn	27.4

**Significant Cooper Intercepts at the Renison Mine June 2010 Quarter**

<b>Lode</b>	<b>Hole</b>	<b>N</b>	<b>E</b>	<b>Intercept</b>	<b>From</b>
Federal	U4081	65,783	44,464.3	1.40m @ 1.80% Cu	122.0
Federal	U4173	65,694	44,476.6	1.00m @ 1.01% Cu	111.0
Federal	U4174	65,694	44,476.6	2.72m @ 0.78% Cu	113.8
				1.00m @ 1.40% Cu	148.0
				7.00m @ 0.39% Cu	167.0
Federal	U4177	65,752	44,483.7	1.06m @ 0.59% Cu	103.5
				1.00m @ 1.75% Cu	112.0
				1.35m @ 11.44% Cu	115.7
Federal	U4178	65,752	44,483.7	6.18m @ 1.56% Cu	118.3
				1.62m @ 0.69% Cu	140
Federal	U4180	65,790	44,464.4	3.00m @ 0.43% Cu	186.3
Federal	U4181	65,753	44,483.8	1.98m @ 0.70% Cu	132.4
Federal	U4182	65,753	44,483.7	1.38m @ 1.77% Cu	124.6
				3.32m @ 2.46% Cu	135
Federal	U4183	65,782	44,464.4	5.09m @ 3.21% Cu	155.2
Federal	U4185	65,790	44,464.4	3.57m @ 2.46% Cu	199.0
Federal	U4186	65,782	44,464.4	1.00m @ 0.98% Cu	144.0
Federal	U4187	65,782	44,464.3	2.54m @ 2.40% Cu	110.9
Lower King	U4192	66,756	44,246.9	9.74m @ 0.56% Cu	126.0
				1.30m @ 0.63% Cu	141.5
Mid Federal	U4199	65,693	44,444.2	9.75m @ 1.01% Cu	21.3
Mid Federal	U4200	65,686	44,444.4	10.08m @ 2.01% Cu	18.9
Mid Federal	U4201	65,686	44,444.5	7.88m @ 1.82% Cu	20.0
				4.29m @ 0.66% Cu	33.1
Mid Federal	U4202	65,683	44,444.4	9.78m @ 1.43% Cu	17.5
Mid Federal	U4203	65,682	44,444.5	4.95m @ 1.71% Cu	20.2
				4.40m @ 1.23% Cu	31.5
Mid Federal	U4204	65,681	44,442.5	11.67m @ 2.29% Cu	28.5
				5.32m @ 1.90% Cu	49.4
Mid Federal	U4205	65,681	44,442.3	8.70m @ 1.80% Cu	45.3
				5.07m @ 1.66% Cu	58.8

# Appendix 5B

## Mining exploration entity quarterly report

Introduced 1/7/96. Origin: Appendix 8. Amended 1/7/97, 1/7/98, 30/9/2001.

Name of entity

Metals X Limited

ABN

25 110 150 055

Quarter ended ("current quarter")

30 June 2010

### Consolidated statement of cash flows

Cash flows related to operating activities	Current quarter \$A'000	Year to date \$A'000
1.1 Receipts from product sales and related debtors	19,639	91,885
1.2 Payments for (a) exploration and evaluation	(878)	(2,454)
(b) development	(2,166)	(9,380)
(c) production	(13,174)	(80,212)
(d) administration	(869)	(3,260)
1.3 Dividends received		
1.4 Interest and other items of a similar nature received	333	952
1.5 Interest and other costs of finance paid	(115)	(1,000)
1.6 Income taxes paid		
1.7 Other (sale of scrap/assets)	356	708
<b>Net Operating Cash Flows</b>	<b>3,126</b>	<b>(2,761)</b>
<b>Cash flows related to investing activities</b>		
1.8 Payment for purchases of:		
(a) prospects		
(b) equity investments	(2,412)	(47,975)
(c) other fixed assets	(586)	(2,558)
1.9 Proceeds from sale of:		
(a) prospects		
(b) equity investments		62
(c) other fixed assets	82	70,975
1.10 Loans to other entities		
1.11 Loans repaid by other entities		
1.12 Other (cash acquired on purchase of controlled entity)		
<b>Net investing cash flows</b>	<b>(2,916)</b>	<b>20,504</b>
1.13 Total operating and investing cash flows (carried forward)	210	17,743

+ See chapter 19 for defined terms.

**Appendix 5B**  
**Mining exploration entity quarterly report**

1.13	Total operating and investing cash flows (brought forward)	210	17,743
	<b>Cash flows related to financing activities</b>		
1.14	Proceeds from issues of shares, options, etc.		16,020
1.15	Proceeds from sale of forfeited shares		
1.16	Proceeds from borrowings		
1.17	Repayment of borrowings	(589)	(4,573)
1.18	Dividends paid		
1.19	Other – (capital raising costs)		(33)
	<b>Net financing cash flows</b>	(589)	11,414
	<b>Net increase (decrease) in cash held</b>	(379)	29,157
1.20	Cash at beginning of quarter/year to date	40,741	11,205
1.21	Exchange rate adjustments to item 1.20		
1.22	<b>Cash at end of quarter</b>	40,362	40,362

**Payments to directors of the entity and associates of the directors**  
**Payments to related entities of the entity and associates of the related entities**

		Current quarter \$A'000
1.23	Aggregate amount of payments to the parties included in item 1.2	191
1.24	Aggregate amount of loans to the parties included in item 1.10	

1.25 Explanation necessary for an understanding of the transactions

**Non-cash financing and investing activities**

2.1 Details of financing and investing transactions which have had a material effect on consolidated assets and liabilities but did not involve cash flows

2.2 Details of outlays made by other entities to establish or increase their share in projects in which the reporting entity has an interest

+ See chapter 19 for defined terms.

**Financing facilities available**

*Add notes as necessary for an understanding of the position.*

	Amount available \$A'000	Amount used \$A'000
3.1 Loan facilities	2,835	2,835
3.2 Credit standby arrangements	-	-

**Estimated cash outflows for next quarter**

	\$A'000
4.1 Exploration and evaluation	1,000
4.2 Development	2,000
4.3 Production	12,000
4.4 Administration	1,000
<b>Total</b>	<b>16,000</b>

**Reconciliation of cash**

Reconciliation of cash at the end of the quarter (as shown in the consolidated statement of cash flows) to the related items in the accounts is as follows.

	Current quarter \$A'000	Previous quarter \$A'000
5.1 Cash on hand and at bank	13,362	36,488
5.2 Deposits at call	27,000	4,255
5.3 Bank overdraft	-	-
5.4 Other (provide details)	-	-
<b>Total: cash at end of quarter (item 1.22)</b>	<b>40,362</b>	<b>40,741</b>

**Changes in interests in mining tenements**

	Tenement reference	Nature of interest (note (2))	Interest at beginning of quarter	Interest at end of quarter
6.1	Interests in mining tenements relinquished, reduced or lapsed			
6.2	Interests in mining tenements acquired or increased			

+ See chapter 19 for defined terms.

**Appendix 5B**  
**Mining exploration entity quarterly report**

**Issued and quoted securities at end of current quarter**

*Description includes rate of interest and any redemption or conversion rights together with prices and dates.*

	Total number	Number quoted	Issue price per security (see note 3) (cents)	Amount paid up per security (see note 3) (cents)
7.1 <b>Preference securities</b> <i>(description)</i>				
7.2 Changes during quarter (a) Increases through issues (b) Decreases through returns of capital, buy-backs, redemptions				
7.3 <b>+Ordinary securities</b>	1,365,661,782	1,365,661,782		
7.4 Changes during quarter (a) Increases through issues  (b) Decreases through returns of capital, buy-backs				
7.5 <b>+Convertible debt securities</b> <i>(description)</i>				
7.6 Changes during quarter (a) Increases through issues (b) Decreases through securities matured, converted				
7.7 <b>Options</b> <i>(description and conversion factor)</i>	2,800,000 700,000 4,000,000 425,000 1,000,000 1,000,000 2,850,000 2,500,000		<i>Exercise price</i> 40 cents 35 cents 46 cents 36 cents 45 cents 46 cents 13 cents 14 cents	<i>Expiry date</i> 30/06/2011 31/08/2011 30/11/2010 31/03/2012 31/07/2012 30/11/2010 30/11/2013 30/11/2012
7.8 Issued during quarter				
7.9 Exercised during quarter				

+ See chapter 19 for defined terms.

**Appendix 5B**  
**Mining exploration entity quarterly report**

7.10	Expired during quarter	400,000 200,000 500,000 250,000		34 cents 36 cents 13 cents 13 cents	30/04/2010 31/03/2012 30/06/2012 30/11/2013
7.11	<b>Debentures</b> <i>(totals only)</i>				
7.12	<b>Unsecured notes</b> <i>(totals only)</i>				

**Compliance statement**

- 1 This statement has been prepared under accounting policies which comply with accounting standards as defined in the Corporations Act or other standards acceptable to ASX (see note 4).
- 2 This statement does ~~does not~~\* give a true and fair view of the matters disclosed.

Sign here: ..... W.S Hallam ..... Date: ..... 28 JULY 2010 .....  
(Director)

Print name: ..... WARREN HALLAM .....

**Notes**

- 1 The quarterly report provides a basis for informing the market how the entity's activities have been financed for the past quarter and the effect on its cash position. An entity wanting to disclose additional information is encouraged to do so, in a note or notes attached to this report.
- 2 The "Nature of interest" (items 6.1 and 6.2) includes options in respect of interests in mining tenements acquired, exercised or lapsed during the reporting period. If the entity is involved in a joint venture agreement and there are conditions precedent which will change its percentage interest in a mining tenement, it should disclose the change of percentage interest and conditions precedent in the list required for items 6.1 and 6.2.
- 3 **Issued and quoted securities** The issue price and amount paid up is not required in items 7.1 and 7.3 for fully paid securities.
- 4 The definitions in, and provisions of, *AASB 1022: Accounting for Extractive Industries* and *AASB 1026: Statement of Cash Flows* apply to this report.
- 5 **Accounting Standards** ASX will accept, for example, the use of International Accounting Standards for foreign entities. If the standards used do not address a topic, the Australian standard on that topic (if any) must be complied with.

== == == == ==

---

+ See chapter 19 for defined terms.